



FOLLOW US
@pspwinnipeg

SUMMER CAMP



• GAMES • CRAFTS • FUN • SPORTS • SCIENCE •

**CAMP DAYS
SPECIAL WEEK
FULL WEEK CAMP**

6-12 YEARS OLD

**MILITARY, VETERANS & DND SIGN UP TO SAVE YOUR SPOT ONLINE
STARTING MONDAY, JANUARY 20.**



CAMP DAYS



BEFORE CARE 0730 - 0900 hrs • **CAMP DAY 0900-1530 hrs** • AFTER CARE 1530 - 1630 hrs

AUGUST 5, 6, 26 & 27

PRICE PER DAY

Military / Veteran with PSP Plan	\$20 + GST	Military / Veteran Non-PSP Plan	\$28 + GST
PSP Plan	\$32 + GST	Non-PSP Plan	\$38 + GST

AUGUST 7 DAY AT THE ZOO

* **DROP OFF 0900 HRS & PICK UP 1600 HRS AT THE ZOO** *

PRICE PER DAY

Military / Veteran with PSP Plan	\$33.55 + GST	Military / Veteran Non-PSP Plan	\$41.55 + GST
PSP Plan	\$45.55 + GST	Non-PSP Plan	\$51.55 + GST

AUGUST 28 DAY AT ASSINIBOINE PARK

* **DROP OFF 0900 HRS & PICK UP 1600 HRS AT ASSINIBOINE PARK NATURE PLAYGROUND** *

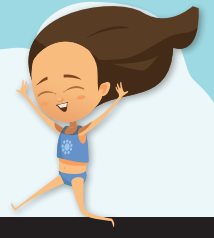
PRICE PER DAY

Military / Veteran with PSP Plan	\$26.25 + GST	Military / Veteran Non-PSP Plan	\$34.25 + GST
PSP Plan	\$38.25 + GST	Non-PSP Plan	\$44.25 + GST



SPECIAL WEEK

3 DAYS



BEFORE CARE 0730 - 0900 hrs • **CAMP DAY 0900-1600 hrs** • AFTER CARE 1600 - 1630 hrs

JULY 15-17 MAD SCIENCE

Military / Veteran with PSP Plan	\$150 + GST	Military / Veteran Non-PSP Plan	\$160 + GST
PSP Plan	\$160 + GST	Non-PSP Plan	\$175 + GST

PRICE PER WEEK DIFFERENCE REFLECTS THE COST OF THE FIELD TRIP ON FRIDAY.



JULY 7-11 WATER WEEK

Field Trip to Transcona Aquatic Park on Friday, July 11

HOT LUNCH WEDNESDAY – PIZZA (ADDITIONAL COST)

Military / Veteran with PSP Plan	\$103.63 + GST	Military / Veteran Non-PSP Plan	\$143.63 + GST
PSP Plan	\$163.63 + GST	Non-PSP Plan	\$193.63 + GST

JULY 21-25 SPACE WEEK

Field Trip to Manitoba Museum on Friday, July 25

HOT LUNCH WEDNESDAY – BURRITO SPLENDIDO (ADDITIONAL COST)

Military / Veteran with PSP Plan	\$114.25 + GST	Military / Veteran Non-PSP Plan	\$154.25 + GST
PSP Plan	\$174.25 + GST	Non-PSP Plan	\$204.25 + GST

JULY 28- AUGUST 1 SPIRIT WEEK

Field Trip to Civic Centre pool on Thursday, July 31 *CAMPERS TO BE PICKED UP AT 1600 HRS AT CIVIC CENTRE

HOT LUNCH WEDNESDAY – PIZZA (ADDITIONAL COST)

Military / Veteran with PSP Plan	\$103.63 + GST	Military / Veteran Non-PSP Plan	\$143.63 + GST
PSP Plan	\$163.63 + GST	Non-PSP Plan	\$193.63 + GST

AUGUST 11-15 SPORTS WEEK

Field Trip to Uptown Alley in the afternoon on Friday, August 15

HOT LUNCH WEDNESDAY – BURRITO SPLENDIDO (ADDITIONAL COST)

Military / Veteran with PSP Plan	\$116.99 + GST	Military / Veteran Non-PSP Plan	\$156.99 + GST
PSP Plan	\$176.99 + GST	Non-PSP Plan	\$206.99 + GST

AUGUST 18-22 HISTORY WEEK

Field Trip to Lower Fort Garry on Friday, August 22

HOT LUNCH WEDNESDAY – PIZZA (ADDITIONAL COST)

Military / Veteran with PSP Plan	\$118 + GST	Military / Veteran Non-PSP Plan	\$158 + GST
PSP Plan	\$178 + GST	Non-PSP Plan	\$208 + GST

PRICE PER WEEK DIFFERENCE REFLECTS THE COST OF THE FIELD TRIP ON FRIDAY.

DAILY SCHEDULE

More information specific to each week will be sent out in a weekly e-mail to all families the week prior.

* HOT LUNCH ORDER FORMS ARE DUE BY 1000 HRS ON TUESDAYS (JULY 8, JULY 22, JULY 29, AUGUST 12 & AUGUST 19) *

0730 - 0900 hrs	Drop off & Free Play
0900 - 0915 hrs	Morning Snack & Washrooms
0915 - 1145 hrs	Morning Activities (inside or outside)
1145 - 1200 hrs	Washrooms & Transition to Lunch Room
1200 - 1230 hrs	Lunch
1230 - 1300 hrs	Free Play
1300 - 1515 hrs	Afternoon Activities (inside or outside)
1515 - 1530 hrs	Afternoon Snack & Washrooms
1530 - 1630 hrs	Pick up & Free Play

FULL WEEK CAMP FIELD TRIP DAYS

0730 - 0900 hrs	Drop off & Free Play
0900 - 0915 hrs	Morning Snack & Washrooms
0900 - 1515 hrs	Field Trip (including any travel)
1515 - 1530 hrs	Afternoon Snack & Washrooms
1530 - 1630 hrs	Pick up & Free Play

CAMP DAYS AUGUST 7 & AUGUST 28

Day at the Zoo & Day at Assiniboine Park

0900 - 0915 hrs	Drop off at Zoo or Assiniboine Park
0915 - 1200 hrs	Activities
1200 - 1230 hrs	Lunch
1230 - 1530 hrs	Activities
1545 - 1600 hrs	Pick up at Zoo or Assiniboine Park

**Military, Veterans & DND sign up to save your spot online
starting Monday, January 20.**

Payments will be made April 9. Payment plans are available to spread your payment out, all payments must be made 2 weeks before your camp starts. If a payment plan is required, contact Hamilton.Matt@cfmws.com

We do offer inclusion support with our camps. Please note during registration as we have limited availability, if an inclusion support worker is not available we offer the ability for you to provide support for you child.



REGISTRATION REQUIRED • <http://bkk.cfmws.com/winnipegpub>